

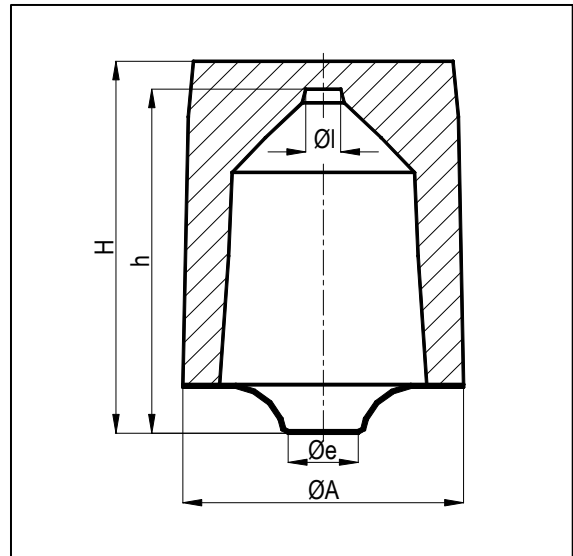
POINT-RISER PKX.. ME-N on sleeve basis

Characteristics:

- highly-exothermic reaction
- very good moulding sand compression under the riser
- small point riser neck
- no contact area on the casting
- fluoride-reduced or fluoride-free exothermic material
- feed metal utilisation up to 60%
- residual material easily removed at shakeout

Applications:

grey cast and ductile iron



Ref.-No.	Type	Vol. [cm ³]	øe [mm]	ØA [mm]	H [mm]	h [mm]	øl [mm]	Riser Modulus	
								Type	[cm]
348911	PKX 50 ME22 N	111	20	85	109	103	8	KX 50-90 Z	1,5
348909	PKX 55 ME27 N	156	25	93	121	115	8	KX 55-100 Z	1,7
348912	PKX 60 ME27 N	214	25	93	131	125	8	KX 60-110 Z	2,0
348913	PKX 70 ME32 N	280	30	98	141	135	8	KX 70-120 Z	2,3
348914	PKX 80 ME41 N	430	40	116	152	144	9	KX 80-130 Z	2,6
348918	PKX 85 ME41 N	559	40	124	162	154	10	KX 80-140 Z	3,2
3489__	PKX 90 ME55 N	695	55	125	180	172	10	KX 90-155 Z	3,4